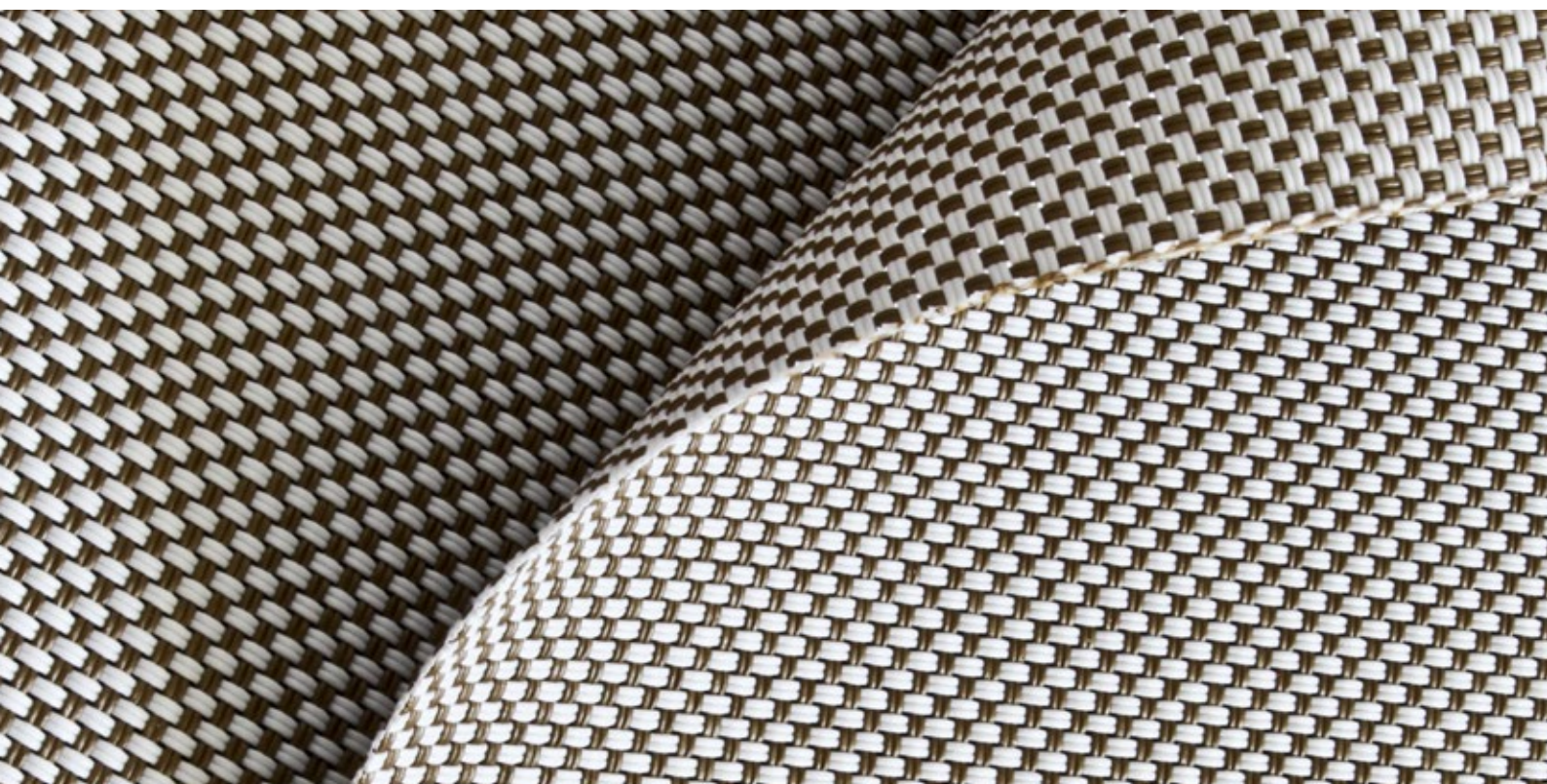
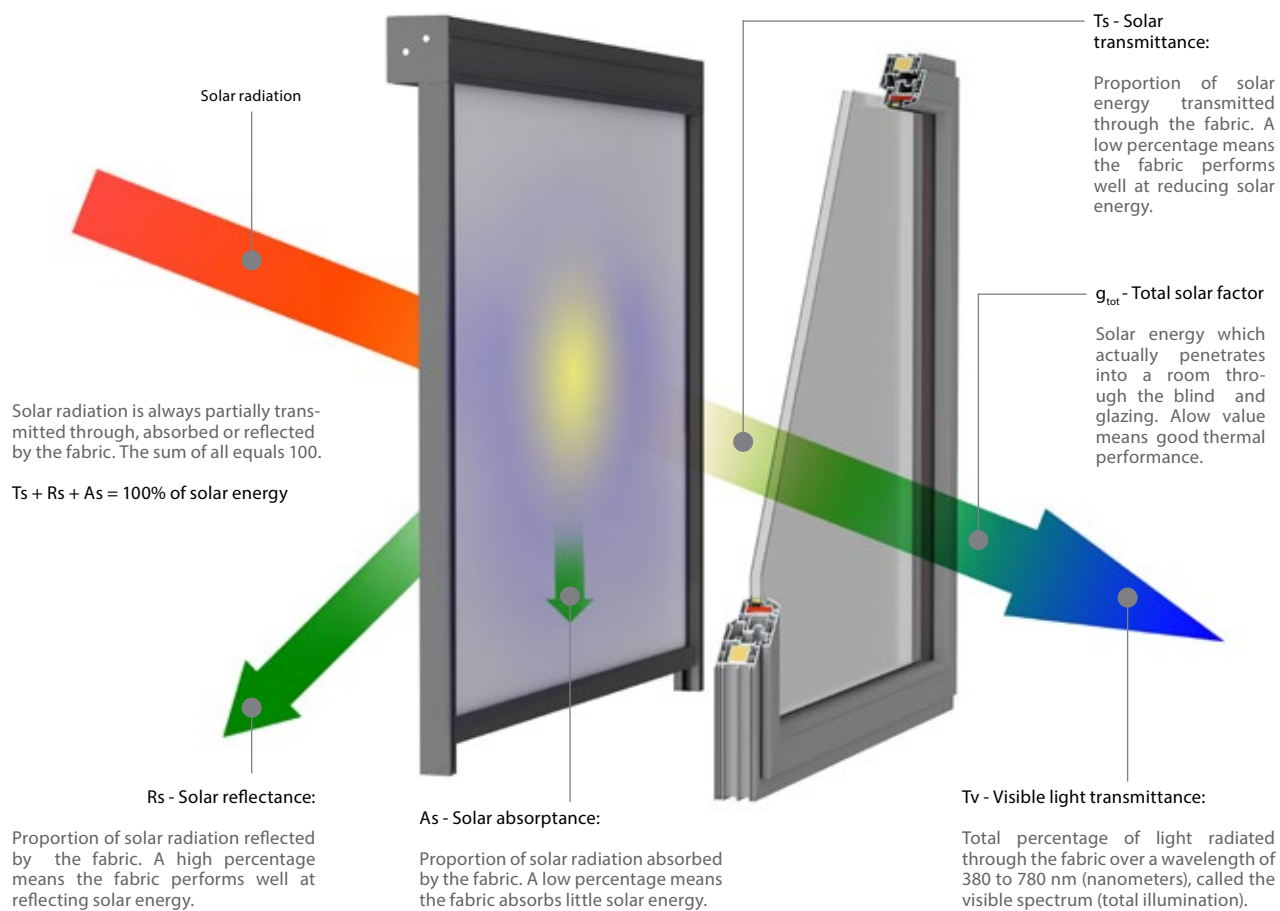




The image shows three layers of screen fabric, each with a different mesh pattern. The top layer is a dark grey fabric with a fine, regular grid pattern. The middle layer is a medium grey fabric with a slightly larger, regular grid pattern. The bottom layer is a light grey fabric with a very fine, regular grid pattern. The fabrics are layered and slightly curved, creating a sense of depth and texture. The text "SCREEN FABRICS" is overlaid in the center in a bold, white, sans-serif font.

SCREEN FABRICS



OPENNES FACTOR:

Relative area of the openings in the fabric. It is considered as independent of the colour. For fabric with the same weave, it should be measured using the darkest colour in the range.

SERGE 1 % / SERGE 600

Collection of fabrics made from fiberglass covered with PVC. Fabrics made of this group have a distinctive diagonal „serge” weave, which guarantees them an unusual dimensional stability. High fire resistance and very good technical parameters of fabrics provide users with visual comfort in rooms, thus protecting against overheating the interior.

POLYSCREEN

Wide group of technical polyester fabrics coated with PVC, characterized by variety of weaving patterns and properties (PS Luminous, PS 550, PS 350). This allows architects to select the right solution, increasing visual attractiveness of the building and to emphasize its individual character. High technical parameters provide optical and thermal comfort inside the room. An additional feature of the fabric is the ease to keep it clean.

BLACK OUT

High-end blackout fabrics (Serge 600 BO Lunar, Polyscreen 314 BO) effectively block sunlight coming into the room. It is ideal solution for conference rooms, audio-visual, photographic studios, etc. High dimensional stability, high technical parameters and interesting colours are without a doubt advantages of fabrics in this group.

SUNWORKER

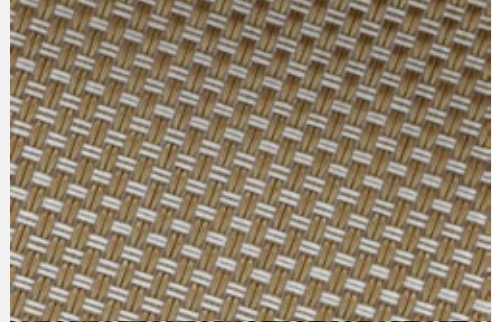
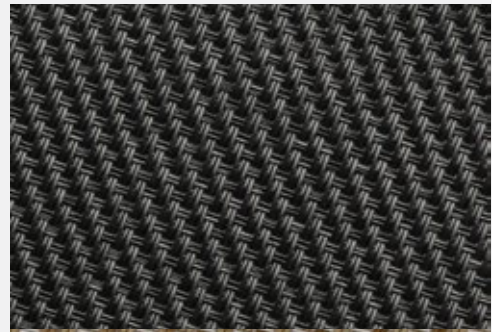
Smooth polyester fabric finished with PVC. Unique structure of the fabric effectively stops the sunlight, allowing for just optimal amount of visible light to transmit inside the room, providing high comfort to its users. The advantages of this fabric are: color fastness, high resistance to weather conditions and easy to maintain clean.

SOLTIS 92 / SOLTIS 99

Polyester technical fabric coated with PVC, manufactured with patented technology Precontraint Ferrari®. The unique technology gives fabric high stability and protects it against deformations even in large size blinds. High technical parameters guarantee optical and thermal comfort. The quality components used in production of this fabric ensures color fastness. Thanks to the smooth surface, the fabric is difficult to absorb dirt or get stained.

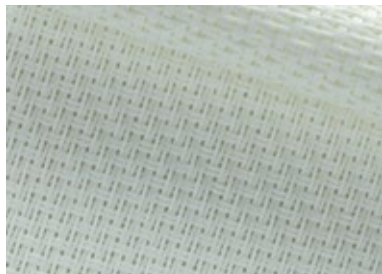
ACOUSTIC - VEROGLIM

Elegant fabric, made from the highest quality non-flammable polyester fibers Trevira® CS, intended for indoor use. Because of its weight, the fabric is ideally suited for cassette systems. An important advantage of this fabric is high coefficient of acoustics. Thanks to its structure, the fabric absorbs sound and mutes the room. Another advantage is metallic surface that reflects bright light and in this way regulates its intensity in the room.



SERGE 600

WHITE - WHITE



60002002

GREY - WHITE



60001002

PEARL - GREY



60007007

GREY - GREY



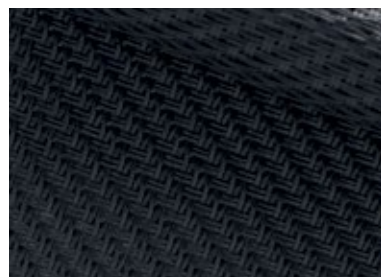
60001001

GREY - CHARCOAL



60001010

CHARCOAL - CHARCOAL

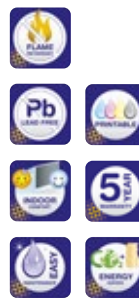


60010010

	composition	weight [g/m ²]	thickness [mm]	light fastness blue scale level EN ISO 105 B02 EN ISO 105 B04	openness factor [%]	EN 14501				application
						TS [%]	RS [%]	AS [%]	TV [%]	
White-White 002002	58% pvc 42% glasfibre + 58% pvc	525	0,74	>7	5	21/21	65.9/66.3	13.2/12.7	21.2/21.2	interior / exterior
Grey-White 001002						6.7/6.7	37.2/26.9	56.2/66.4	6.6/6.6	
Pearl-Grey 007007						10.1/10.1	38.3/39.4	51.7/50.5	8.4/8.4	
Grey-Grey 001001						3.5/3.5	15.1/15.1	81.3/81.4	3.6/3.6	
Grey-Charcoal 001010						3.6/3.6	9.9/12.6	86.5/83.8	3.6/3.6	
Charcoal-Charcoal 010010					3.6/3.6	5.0/4.8	91.4/91.6	3.6/3.6		

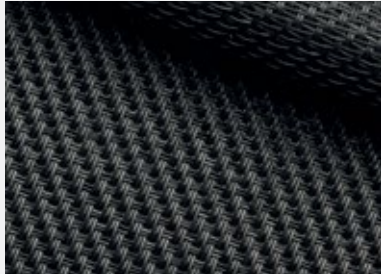
Tearing resistance (daN) UNE EN ISO 4674-1 method 2 - Warp: 8.5, Weft: 7.5
 Breaking strength (daN/5cm) UNE EN ISO 1421 - Warp: 260, Weft: 225
 Certificates: ask for availability

SERGE 600



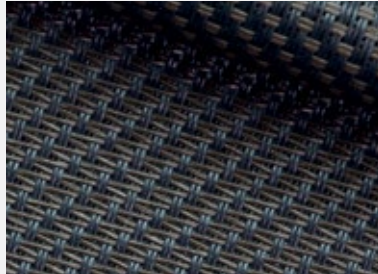
SERGE 600

PURE BLACK



60030030

CHARCOAL - BRONZE



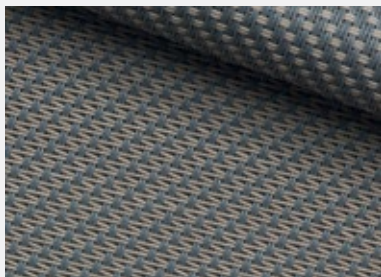
60010011

SANDSTONE



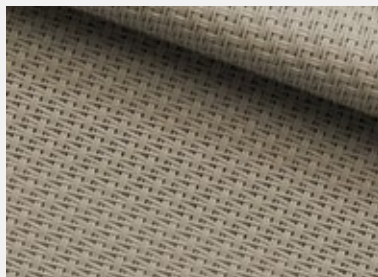
60033033

GREY - SAND



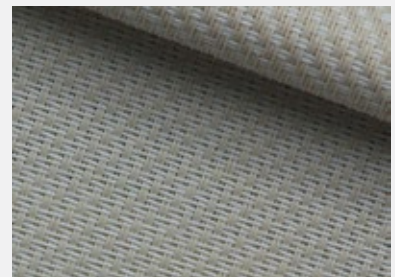
60001003

LINEN - LINEN



60008008

LINEN - WITE

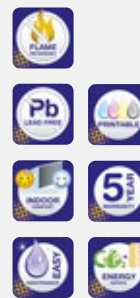


60008002

	composition	weight [g/m ²]	thickness [mm]	light fastness blue scale level EN ISO 105 B02 EN ISO 105 B04	openness factor [%]	EN 14501				application
						TS [%]	RS [%]	AS [%]	TV [%]	
Pure Black 030030	42% glasfibre + 58% pvc	525	0,74	>7	5	5.9	3.7	90.4	5.9	interior / exterior
Charcoal-Bronze 010011						6.1	6.5/6.0	87.4/87.9	6.1	
Sandstone 033033						7.1	20.4/20.5	72.4/72.5	6.8	
Grey-Sand 001003						4.7	26.5/21.5	68.8/73.8	4.5	
Linen-Linen 008008						14.9	52.5/52.7	32.5/32.4	12.9	
Linen-White 008002						15.5	58.2/56.4	26.4/28.1	13.7	

Tearing resistance (daN) UNE EN ISO 4674-1 method 2 - Warp: 8.5, Weft: 7.5
 Breaking strength (daN/5cm) UNE EN ISO 1421 - Warp: 260, Weft: 225
 Certificates: ask for availability

SERGE 600



SERGE 1%

WHITE - WHITE



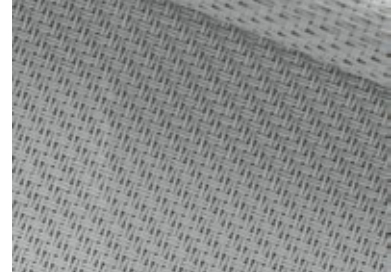
61002002

GREY - WHITE



61001002

PEARL - GREY



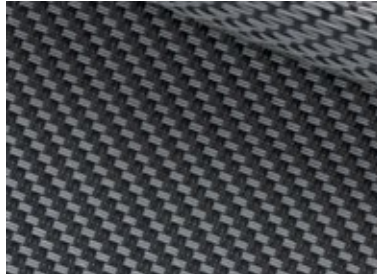
61007007

GREY - GREY



61001001

GREY - CHARCOAL



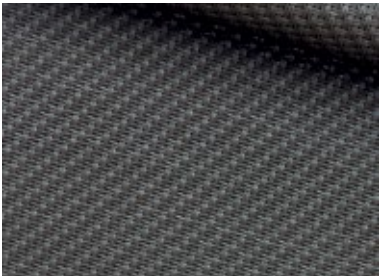
61001010

CHARCOAL - CHARCOAL



61010010

BRONZE - BRONZE



61011011

LINEN - LINEN

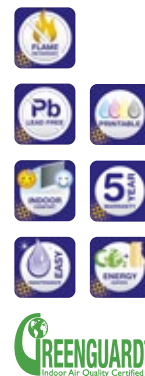


61008008

	composition	weight [g/m ²]	thickness [mm]	light fastness blue scale level EN ISO 105 B02 EN ISO 105 B04	openness factor [%]	EN 14501				application
						TS [%]	RS [%]	AS [%]	TV [%]	
White-White 002002	42% glasfibre + 58% PVC	638	0,78	>7	1	12,8	71,3	15,9	12,9	interior / exterior
Grey-White 001002						2,2	44,8/31,2	53/66,6	2	
Pearl-Grey 007007						2,8	36,9	60,3	2,1	
Grey-Grey 001001						2,4	17,4	80,2	2,2	
Grey-Charcoal 001010						1,2	10,5/14	88,3/84,8	1,2	
Charcoal-Charcoal 010010						1,1	5,9	93	1,1	
Bronze-Bronze 011011						1,4	8,6	90	1,3	
Linen-Linen 008008						5,9	54,2	39,9	3,7	

Tearing resistance (daN) UNE EN ISO 4674-1 method 2 - Warp: 5,9, Weft: 6,2
 Breaking strength (daN/Scm) UNE EN ISO 1421 - Warp: 321, Weft: 277
 Certificates: ask for availability

SERGE 1%



SERGE 600 BO LUNAR

WHITE - WHITE



6BO002002

WHITE - PERL GREY



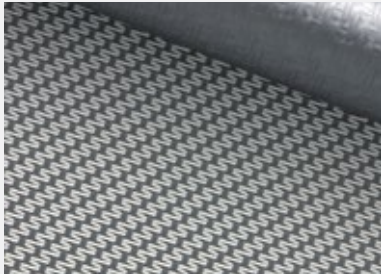
6BO002007

PEARL GREY - PEARL GREY



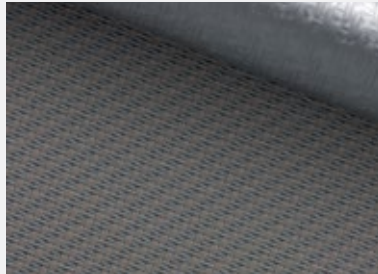
6BO007007

WHITE - GREY



6BO001002

OYSTER SHELL



6BO033001

GREY - GREY



6BO001001

GREY - CHARCOAL



6BO001010

CHARCOAL - CHARCOAL

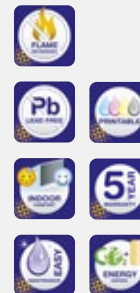


6BO010010

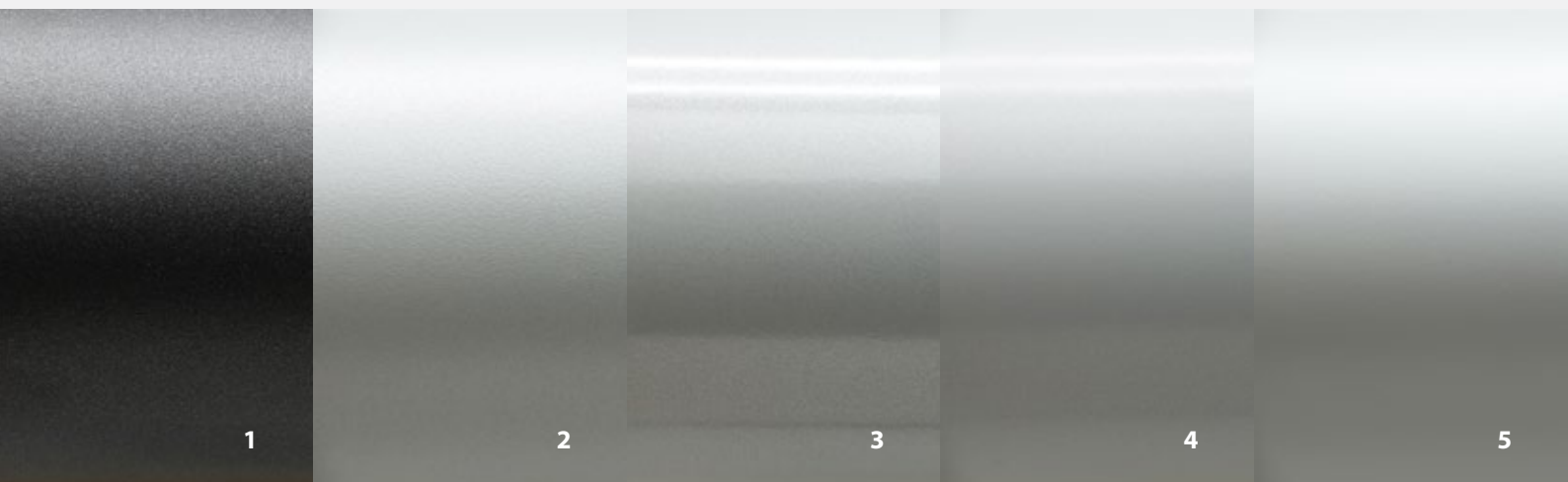
	composition	weight [g/m ²]	thickness [mm]	light fastness blue scale level EN ISO 105 B02 EN ISO 105 B04	openness factor [%]	EN 14501				application
						TS [%]	RS [%]	AS [%]	TV [%]	
White-White 002002	33% GLASFIBRE 47% PVC 20% PVC LAMINATE	678	0,73	>7	0	0	68.8/33.7	31.2/66.3	0	interior / exterior
White-Perl Grey 002007						0	47.8/33.2	52.2/66.8	0	
Pearl Grey-Pearl Grey 007007						0	35.5/34	64.5/66	0	
White-Grey 001002						0	40.3/33.7	59.7/66.3	0	
Oyster Shell 033001						0	18.2/33.4	81.8/66.6	0	
Grey-Grey 001001						0	17.2/33.1	82.8/66.9	0	
Grey-Charcoal 001010						0	11/33.7	89/66.3	0	
Charcoal-Charcoal 010010						0	6.2/33.4	93.8/66.6	0	

Tearing resistance (daN) UNE EN ISO 4674-1 method 2 - Warp: 8.5, Weft: 9
 Breaking strength (daN/5cm) UNE EN ISO 1421 - Warp: 224.2, Weft: 176.6
 Certificates: ask for availability

SERGE 600 BO LUNAR



COATING FINISH



1. "fine structure - pearl mat"
2. "fine structure"
3. satin finish
4. mat finish
5. "artificial anode"

CONSTRUCTION COLOURS

Presented colour chart shows colours available within Selt collection for powder coated construction elements of Refleksols, venetian blinds and sunbreakers. Conditions of painting in colours included in the collection below and in other RAL colours – according to rules described in price lists of individual products. Because of technical and production reasons as well as due to different coating techniques, differences in colours between product components are possible. Presented pictures are for illustration purposes only. Colours may vary from actual ones. Any difference in shade does not constitute grounds for complaint.

SLATS COLOURS

Presented colour chart shows slat colours available within SELT collection. Conditions of painting in colours within Selt collection and other RAL colours – according to rules described in price list of venetian blinds. Because of technical and production reasons as well as due to different coating techniques, differences in colours between product components are possible. Presented pictures are for illustration purposes only. Colours may vary from actual ones. Any difference in shade does not constitute grounds for complaint. Customized perforation (layout and size of openings) and painting in colours outside of SELT collection are subject to individual arrangements in terms of price and conditions of implementation.

